

Colombian palm oil sector:

DEFORESTATION FREE DEVELOPMENT POTENTIAL

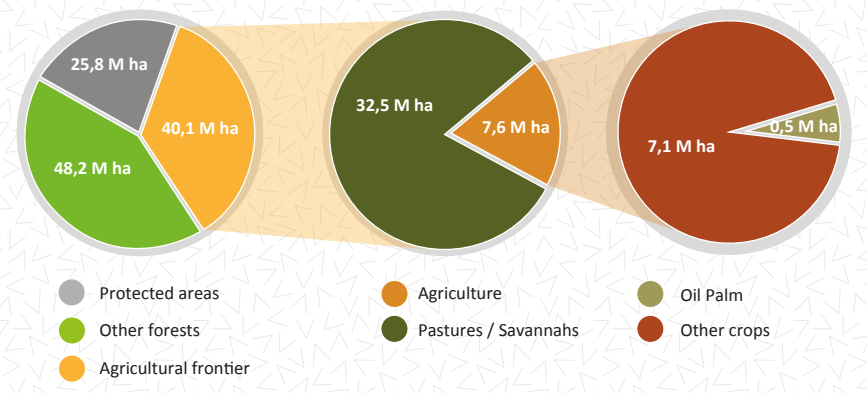
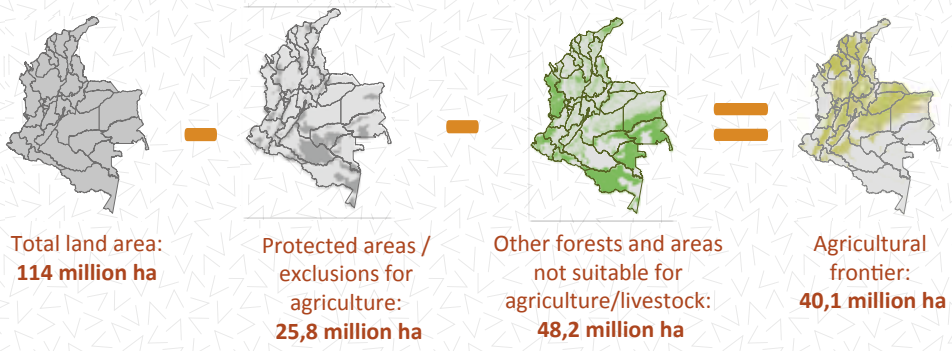
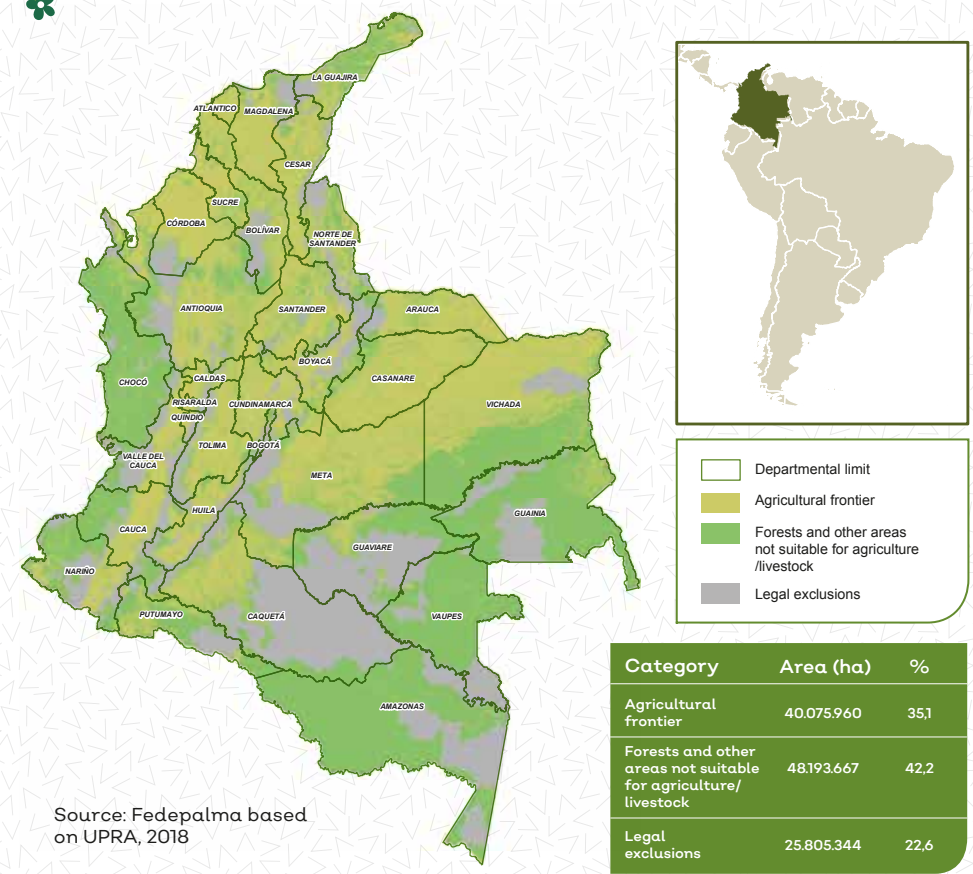
Colombia's Agricultural Frontier was recently delimited by the Ministry of Agriculture and Rural Development and the Ministry of Environment and Sustainable Development.

It excludes protected areas and forested lands, among others.

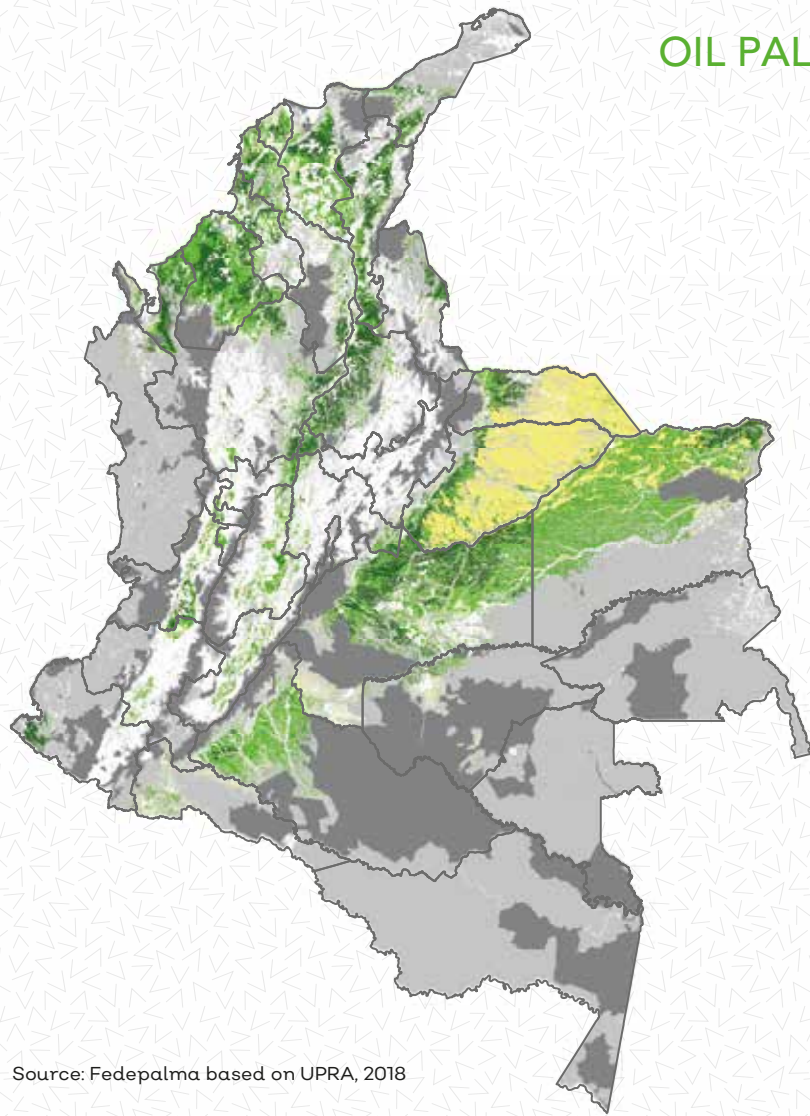
As a result, over **40 million hectares** are considered suitable for agriculture, livestock, and aquaculture without causing deforestation (Rural Planning Unit of the Ministry of Agriculture and Rural Development - UPRA, 2018).

Only **7,6 million hectares** of the agricultural frontier are currently used for agriculture (UPRA 2018).

The other 32,5 million hectares include areas for livestock farming, pastures, and savannahs in the Orinoco basin.



SUITABLE AREAS FOR OIL PALM CULTIVATION IN COLOMBIA



The Rural Planning Unit (UPRA) identified, within the agricultural frontier, **suitable areas for oil palm cultivation, based on physical** (soil and climate), environmental and socioeconomic criteria.



5.2 million hectares have high suitability and other 10.8 million hectares have medium suitability for oil palm cultivation.



By the end of 2018, Colombia had **537,176 hectares with oil palm**; this is equivalent to 7% of its area dedicated to agriculture and 1.3% of its agricultural frontier.



In 2017, the Colombian government, Fedepalma, several oil palm companies and other interested parties signed a **Zero Deforestation Agreement** for the palm oil chain, under the auspices of the governments of Germany, Norway and the United Kingdom.



Colombia has a significant **potential to continue developing its oil palm agro-industry** in suitable areas within its agricultural frontier, without causing deforestation or affecting protected areas.

Source: Fedepalma based on UPRA, 2018

Category	Hectares	%
High suitability	5.174.700	4,54
Medium suitability	10.830.471	9,49
Low suitability	2.861.841	2,51
Very low suitability	4.288.926	3,76
Not suitable - within the agricultural frontier	16.920.021	14,83
Forests and other non-agricultural areas	48.193.667	42,25
Legal exclusions	25.805.344	22,62
Total area	114.074.970	100

